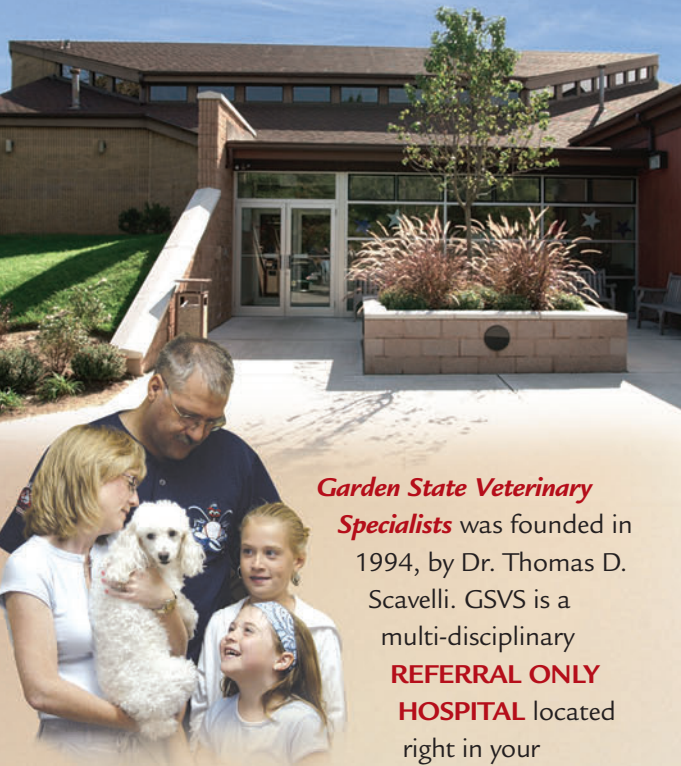


Our Facility



Garden State Veterinary Specialists was founded in 1994, by Dr. Thomas D. Scavelli. GSVS is a multi-disciplinary **REFERRAL ONLY HOSPITAL** located right in your neighborhood.

Our goal is to provide progressive state-of-the-art veterinary care in the fields of surgery, internal medicine, cardiology, neurology/neurosurgery, ophthalmology, dermatology, oncology, nuclear medicine and emergency/critical care. Our 24-hour referral hospital and emergency/critical care unit consists of a team of experienced, dedicated specialists utilizing state-of-the-art diagnostic technologies, cutting-edge medical procedures and an exceptional support staff to provide a caring, nurturing, comprehensive environment. We are committed to making the referral experience one of personal service.

Referral Policy

Patients treated at Garden State Veterinary Specialists must be referred by their veterinarian. The patient will only be treated for the condition for which they were referred, no routine procedures (i.e. vaccinations, prophylactic heartworm testing) are performed on any patients of the hospital.



One Pine Street
Tinton Falls, NJ 07753
S/B GSP Exit 102, N/B GSP Exit 100 A
Tel: 732-922-0011 • Fax 732-922-0991
www.gsvs.org
www.felinehyperthyroidism.com

OPHTHALMOLOGY SERVICES



Petra Anna Lackner, DVM
Diplomate American College of Ophthalmology





At GSVS, the Ophthalmology Service is headed by Petra Anna Lackner, DVM, Diplomate ACVO.

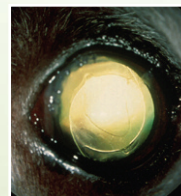
A 1991 Graduate of the University of Minnesota, College of Veterinary Medicine, Dr. Lackner completed a rotating internship in Small Animal Medicine and Surgery at the Veterinary Hospital of the University of Pennsylvania. This was followed by a Fellowship at the prestigious National Eye Institute, a part of the National Institutes of Health in Bethesda, Maryland. Dr. Lackner focused on research in studying the pathophysiology of Diabetic Retinopathy, the leading cause of blindness in people. She next completed a residency in comparative ophthalmology at the Veterinaerchirurgische Klinik in Zurich, Switzerland. After completion of the residency training, she accepted a staff position at The Animal Medical Center in New York City. In 1999, Dr. Lackner became a Diplomate of the American College of Veterinary Ophthalmologists. In 2001, Dr. Lackner accepted a position at Garden State Veterinary Specialists to head the Ophthalmology Service.

Common Eye Diseases

Eye disease affects both younger and older pets. In young dogs, eyelid abnormalities, inflammatory diseases of the eye and trauma are the most common causes for referral to the ophthalmologist. In older dogs, chronic corneal ulcers, cataracts and retinal abnormalities are more often seen. Also, some systemic illnesses, even cancer, can sometimes first be detected by a thorough ophthalmic examination.

Eye Surgeries

At Garden State Veterinary Specialists, some of the more common eye surgeries include cataract removal with implantation of an artificial lens, correction of lid abnormalities, surgery for glaucoma (treatment and preventative management) laser surgery for retinal disease and treatment of neoplasia (cancer) within and around the eye.



Intraocular Lens

What Do These Tests Mean?

Fluorescein Stain Test - A green dye that adheres to deeper structures within the cornea. Once the surface of the cornea is scratched, the dye will show the extent of the damage.

Intraocular Pressure (IOP) - Measures the pressure within the eye, used as an aid in the diagnosis of glaucoma (high pressure) and uveitis (low pressure, inflammation within the eye).

Schirmer Tear Test (STT) - Measures the amount of basal and reflex tear production; used to determine whether keratoconjunctivitis sicca (dry eye) is present.

Electroretinogram Test - Used to evaluate the function of the retina; preceded by 15 minutes of dark adaptation; sedation is usually not needed.

Ocular Ultrasound (Sonogram of the Eye) - Used to evaluate structures within the eye; for example: useful in determining whether a retinal detachment is present.